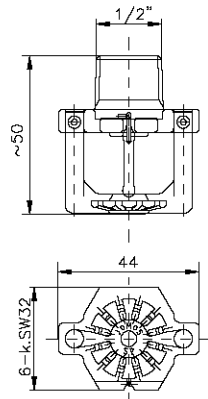


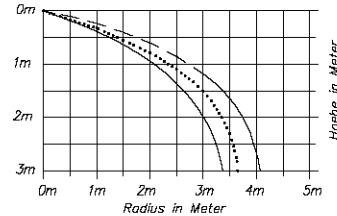
ELO- Spray-Sprinkler DN15- K160, Type: EBSP



Sprühradien

EBSP
K=160

— 0.5 bar
- - - 1.0 bar
- - - 3.0 bar



Technical Dates

Spray characteristics	ELO- Spray-Sprinkler SP, pendent
Responsivity	Quick- Response RTI- 035 Standard- Response RTI- 055 Normal- Response RTI- 105
Max. working pressure	PS 12.5
Min. working pressure	min. 0.35 bar
Temperature range	57°C, 68°C, 79°C, 93°C, 141°C, 182°C, 260°C
K- Factor	K- 160

Material / Coatings

Sprinklerbody /Deflector	roh = Brass gc = Chrome plated / Ral = color coated
Button	Brass
Sealing Assembly	Stainless steel / Teflon
Bulb	Borosilikatglass
Pins	Stainless steel

General Instructions

Do not install any bulb type sprinkler if the bulb is cracked or is a loss of liquid from the bulb. With the sprinkler held horizontally, a small air bubble should be present. The diameter of the air bubble is approximately 1,6mm for the 57° to 2,4mm for the 182° temperature ratings. A leak-tight 3/4 " NPT sprinkler joint should be obtained by applying a minimum to maximum torque of 10 to 14 Nm. Higher levels of torque may distort the sprinkler inlet and cause leakage or impairment of the sprinkler.

Installation Instruction

- Sprinkler may only installed by trained personal.
- Install sprinklers only with the special wrench foreseen for each sprinkler type.
- Install sprinklers only in fully installed and fixed pipe work.
- The threads (fitting / socket) must be clean, free of grease and burrs.

Never install a sprinkler that has had their packaging damaged.

Never install a sprinkler that has been dropped or has suffered any impact.

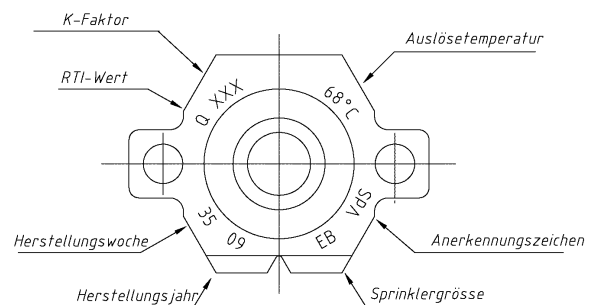
Always to align sprinklers turn clockwise only. Alignment on the opposite side can create leakage.

Warning

- Sprinklers containing in the original packing have been manufactured and tested according the requirements of the sprinkler authorities.
- Any modification to the sprinkler in the form of painting, warp of deflector, will seriously affect the operation. This will lead to withdraw of insurances approval and any guarantee to JOMOS EuroSprinkler AG
- Sprinklers (brass and chrome plated) may only install in normal atmosphere. For areas with aggressive, corrosive atmosphere ore in case of leakage current, use sprinklers with special coating or stainless steel sprinklers.

Sprinkler marking

RTI- value	Q = RTI- 035, S = RTI- 055, N = RTI- 105
Week of manufacturing	35 = Week 35
Year of manufacturing	09 = Year 2009
Temperature range	57°C, 68°C , 79°C, 93°C, 141°C, 182°C, 260°C
Sprinkler size	EB = 1/2" K- 160, EC = 3/4" K- 160
K- Factor	K- 57, K- 80, K- 115, K- 160
Certificated at	Vds



Bezeichnung	roh= Messing	mc= mattchrom	gc= glanzchrom	Ral = lackiert
EBSP 1/2" 57°C RTI- 035	Art. Nr. 715 700	Art. Nr. 715 701	Art. Nr. 715 702	Art. Nr. 715 703
EBSP 1/2" 68°C RTI- 035	Art. Nr. 715 710	Art. Nr. 715 711	Art. Nr. 715 712	Art. Nr. 715 713
EBSP 1/2" 79°C RTI- 035	Art. Nr. 715 720	Art. Nr. 715 721	Art. Nr. 715 722	Art. Nr. 715 723
EBSP 1/2" 93°C RTI- 035	Art. Nr. 715 730	Art. Nr. 715 731	Art. Nr. 715 732	Art. Nr. 715 733
EBSP 1/2" 141°C RTI- 035	Art. Nr. 715 740	Art. Nr. 715 741	Art. Nr. 715 742	Art. Nr. 715 743
Vds- Nr. G 4060021				
EBSP 1/2" 57°C RTI- 055	Art. Nr. 715 770	Art. Nr. 715 771	Art. Nr. 715 772	Art. Nr. 715 773
EBSP 1/2" 68°C RTI- 055	Art. Nr. 715 780	Art. Nr. 715 781	Art. Nr. 715 782	Art. Nr. 715 783
EBSP 1/2" 79°C RTI- 055	Art. Nr. 715 790	Art. Nr. 715 791	Art. Nr. 715 792	Art. Nr. 715 793
EBSP 1/2" 93°C RTI- 055	Art. Nr. 715 800	Art. Nr. 715 801	Art. Nr. 715 802	Art. Nr. 715 803
EBSP 1/2" 141°C RTI- 055	Art. Nr. 715 810	Art. Nr. 715 811	Art. Nr. 715 812	Art. Nr. 715 813
EBSP 1/2" 182°C RTI- 055	Art. Nr. 715 820	Art. Nr. 715 821	Art. Nr. 715 822	Art. Nr. 715 823
EBSP 1/2" 260°C RTI- 055	Art. Nr. 715 825	Art. Nr. 715 826	Art. Nr. 715 827	Art. Nr. 715 828
Vds- Nr. G 4060023				
EBSP 1/2" 57°C RTI- 105	Art. Nr. 715 830	Art. Nr. 715 831	Art. Nr. 715 832	Art. Nr. 715 833
EBSP 1/2" 68°C RTI- 105	Art. Nr. 715 840	Art. Nr. 715 841	Art. Nr. 715 842	Art. Nr. 715 843
EBSP 1/2" 79°C RTI- 105	Art. Nr. 715 850	Art. Nr. 715 851	Art. Nr. 715 852	Art. Nr. 715 853
EBSP 1/2" 93°C RTI- 105	Art. Nr. 715 860	Art. Nr. 715 861	Art. Nr. 715 862	Art. Nr. 715 863
EBSP 1/2" 141°C RTI- 105	Art. Nr. 715 870	Art. Nr. 715 871	Art. Nr. 715 872	Art. Nr. 715 873
EBSP 1/2" 182°C RTI- 105	Art. Nr. 715 880	Art. Nr. 715 881	Art. Nr. 715 882	Art. Nr. 715 883
EBSP 1/2" 260°C RTI- 105	Art. Nr. 715 885	Art. Nr. 715 886	Art. Nr. 715 887	Art. Nr. 715 888
Vds- Nr. G 4060025				