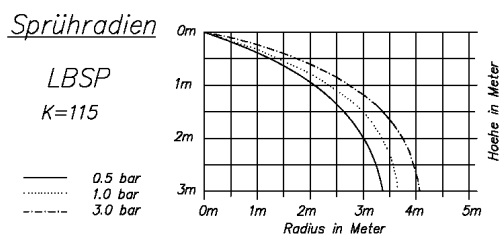
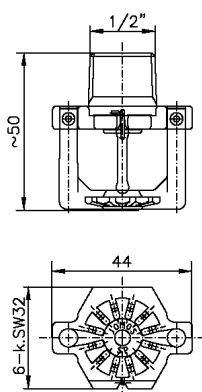


# LO- Spray-Sprinkler DN15- K115, Type: LBSP



## Technical Dates

Spray characteristics	Spray-Sprinkler Sp pendent
Responsivity	Quick- Response RTI- 035
	Standard- Response RTI- 055
	Normal- Response RTI- 105
Max. working pressure	PS 12.5
Min. working pressure	min. 0.35 bar
Temperature range	57°C, 68°C, 79°C, 93°C, 141°C, 182°C, 260°C
K- Factor	K115

## Material / Coatings

Sprinklerbody /Deflector	roh = Brass	
	gc = Chrome plated	/ Ral = colour coated
Button	Brass	
Sealing Assembly	Stainless steel / Teflon	
Bulb	Borosilikatglass	
Pins	Stainless steel	

## General Instruktionen

Do not install any bulb type sprinkler if the bulb is cracked or is a loss of liquid from the bulb. With the sprinkler held horizontally, a small air bubble should be present. The diameter of the air bubble is approximately 1,6mm for the 57° to 2,4mm for the 182° temperature ratings. A leak-tight ¼ " NPT sprinkler joint should be obtained by applying a minimum to maximum torque of 10 to 14 Nm. Higher levels of torque may distort the sprinkler inlet and cause leakage or impairment of the sprinkler.

## Installation Instruction

- Sprinkler may only installed by trained personal.
- Install sprinklers only with the special wrench foreseen for each sprinkler type.
- Install sprinklers only in fully installed and fixed pipe work.
- The threads (fitting / socket) must be clean, free of grease and burrs.

**Never** install a sprinkler that has had their packaging damaged.

**Never** install a sprinkler that has been dropped or has suffered any impact.

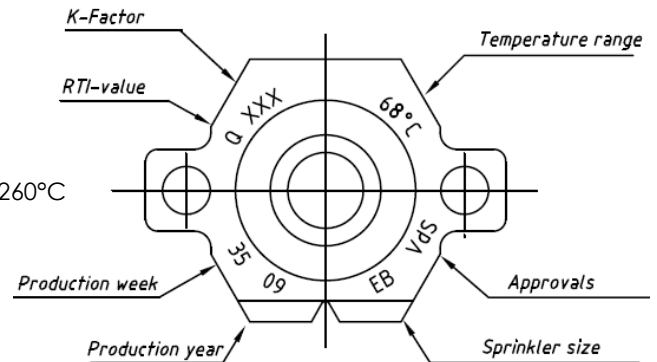
**Always** to align sprinklers turn clockwise only. Alignment on the opposite side can create leakage.

## Warning

- Sprinklers containing in the original packing have been manufactured and tested according the requirements of the sprinkler authorities.
- Any modification to the sprinkler in the form of painting, warp of deflector, will seriously affect the operation. This will lead to withdraw of insurances approval and any guarantee to JOMOS EuroSprinkler AG
- Sprinklers (brass and chrome plated) may only install in normal atmosphere. For areas with aggressive, corrosive atmosphere ore in case of leakage current, use sprinklers with special coating or stainless steel sprinklers.

## Sprinkler marking

RTI- value	<b>Q</b> = RTI- 035, <b>S</b> = RTI- 055, <b>N</b> = RTI- 105
Week of manufacturing	<b>35</b> = Week 35
Year of manufacturing	<b>09</b> = Year 2009
Temperature range	57°C, <b>68°C</b> , 79°C, 93°C, 141°C, 182°C, 260°C
Sprinkler size	<b>EB</b> = ½" K- 160, <b>EC</b> = ¾" K- 160
K- Factor	K- 57, K- 80, K- 115, K- 160
Certificated at	<b>Vds</b>
EC-Certificate of Conformity	<b>CE</b>



Bezeichnung	roh= Messing	mc= mattchrom	gc= glanzchrom	Ral = lackiert
LBSP 1/2" 57°C RTI- 035	Art. Nr. 706 000	Art. Nr. 706 001	Art. Nr. 706 002	Art. Nr. 706 003
LBSP 1/2" 68°C RTI- 035	Art. Nr. 706 010	Art. Nr. 706 011	Art. Nr. 706 012	Art. Nr. 706 013
LBSP 1/2" 79°C RTI- 035	Art. Nr. 706 020	Art. Nr. 706 021	Art. Nr. 706 022	Art. Nr. 706 023
LBSP 1/2" 93°C RTI- 035	Art. Nr. 706 030	Art. Nr. 706 031	Art. Nr. 706 032	Art. Nr. 706 033
LBSP 1/2" 141°C RTI- 035	Art. Nr. 706 040	Art. Nr. 706 041	Art. Nr. 706 042	Art. Nr. 706 043
Vds- Nr. G 4040002				
LBSP 1/2" 57°C RTI- 055	Art. Nr. 706 060	Art. Nr. 706 061	Art. Nr. 706 062	Art. Nr. 706 063
LBSP 1/2" 68°C RTI- 055	Art. Nr. 706 070	Art. Nr. 706 071	Art. Nr. 706 072	Art. Nr. 706 073
LBSP 1/2" 79°C RTI- 055	Art. Nr. 706 080	Art. Nr. 706 081	Art. Nr. 706 082	Art. Nr. 706 083
LBSP 1/2" 93°C RTI- 055	Art. Nr. 706 090	Art. Nr. 706 091	Art. Nr. 706 092	Art. Nr. 706 093
LBSP 1/2" 141°C RTI- 055	Art. Nr. 706 100	Art. Nr. 706 101	Art. Nr. 706 102	Art. Nr. 706 103
LBSP 1/2" 182°C RTI- 055	Art. Nr. 706 110	Art. Nr. 706 111	Art. Nr. 706 112	Art. Nr. 706 113
LBSP 1/2" 260°C RTI- 055	Art. Nr. 706 115	Art. Nr. 706 116	Art. Nr. 706 117	Art. Nr. 706 118
Vds- Nr. G 4040005				
LBSP 1/2" 57°C RTI- 105	Art. Nr. 706 120	Art. Nr. 706 121	Art. Nr. 706 122	Art. Nr. 706 123
LBSP 1/2" 68°C RTI- 105	Art. Nr. 706 130	Art. Nr. 706 131	Art. Nr. 706 132	Art. Nr. 706 133
LBSP 1/2" 79°C RTI- 105	Art. Nr. 706 140	Art. Nr. 706 141	Art. Nr. 706 142	Art. Nr. 706 143
LBSP 1/2" 93°C RTI- 105	Art. Nr. 706 150	Art. Nr. 706 151	Art. Nr. 706 152	Art. Nr. 706 153
LBSP 1/2" 141°C RTI- 105	Art. Nr. 706 160	Art. Nr. 706 161	Art. Nr. 706 162	Art. Nr. 706 163
LBSP 1/2" 182°C RTI- 105	Art. Nr. 706 170	Art. Nr. 706 171	Art. Nr. 706 172	Art. Nr. 706 173
LBSP 1/2" 260°C RTI- 105	Art. Nr. 706 180	Art. Nr. 706 181	Art. Nr. 706 182	Art. Nr. 706 183
Vds- Nr. G 4040008				